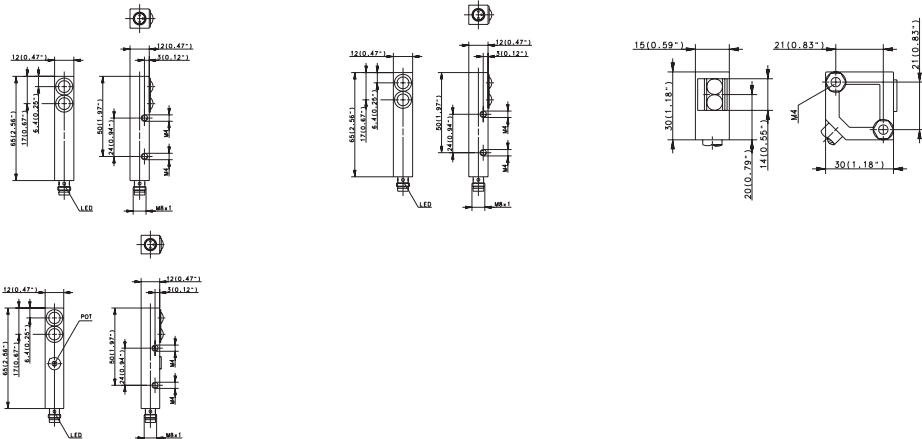


12 x 12 x 65 mm	12 x 12 x 65 mm	30 x 30 x 15 mm	
Diffuse-reflection sensor Type D	Diffuse-reflection sensor Type D	Diffuse-reflection sensor Type D	
50 mm	1.2 m	1.2 m	
Connector M8	Connector M8	Cable 3 m	
Fixed focus/...		Antivalent ^②	



6558955001 OR12FF-DHTP-0050-SL	6557955002 OR12RT-DHTP-01.2-SLE	6554955001 OR12RS-DHTP-04.0-SL 6554755001 OR12RS-DDTP-04.0-SL	6557875003 ^② OR05RT-DATP-01.2-3DE			

10–36 VDC	10–36 VDC	10–36 VDC	10–36 VDC	
200 mA	200 mA	200 mA	200 mA	
100 Hz	100 Hz	100 Hz	< 1 kHz	
Cyclic	Cyclic	Cyclic	Yes	
LED/-	LED/-	LED/-	LED/LED	
-	Yes	-	Yes	
IR 880 nm	IR 880 nm	IR 880 nm	IR 880 nm	

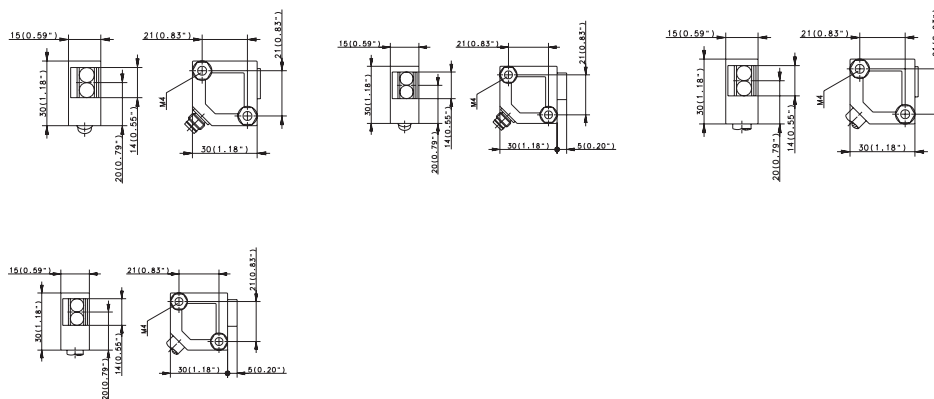
-5°C/+70°C	-5°C/+70°C	-5°C/+70°C	-25°C/+70°C	
IP65	IP65	IP65	IP67	
CuZn39Pb3	CuZn39Pb3	CuZn39Pb3	PBTB	
M8 x 1	M8 x 1	M8 x 1	4 x 0.14 mm ²	

② Antivalent output



Optoelectronic Sensors (Type 30 x 30 mm, 40 x 26 mm)

Type	30 x 30 x 15 mm	30 x 30 x 15 mm	30 x 30 x 15 mm
Operating mode	Diffuse-reflection sensor Type D	Retro-reflective sensor Type R	Retro-reflective sensor Type R
Sensing range	1.2 m	4 m	4 m
Type of connection	Connector M8/Ø8	Cable 2 m polarised	Cable 3 m polarised
Special feature			



PNP	Light activated Type Dark activated Type Programmable Type	6557975003 OR05RT-DHTP-01.2-SLFE	6555975002 OR05PS-DHTP-04.0-3LFE	6555875001 ^② OR05PS-DATP-04.0-3DE	6551875003 ^② OR05EE-DATP-12.0-3DE
NPN	Light activated Type Dark activated Type Programmable Type				
Transmitter	Type				6551075003 OR05SE-DOOS-12.0-3C
Relay output					
NAMUR					
Analogue	Current output Voltage output				
2-wire	DC AC				

Technical data

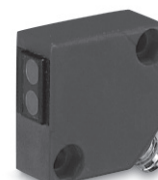
Rated operating voltage	U_B	10–36 VDC	10–36 VDC	10–36 VDC	10–36 VDC
Rated operating current	I_B	200 mA	200 mA	200 mA	–
Switching frequency (max)	F	< 1000 Hz	< 1 kHz	< 1 kHz	–
Short circuit-protection		Yes	Yes	Yes	–
Function/operating voltage indicator		LED/LED	LED/LED	LED/LED	LED/LED
Sensitivity adjustable		Yes	Yes	Yes	Yes
Teachable					
Timer function					
Diagnostic function					
Type of light		IR 880 nm	red 660 nm	red 660 nm	IR 880 nm

Mechanical data

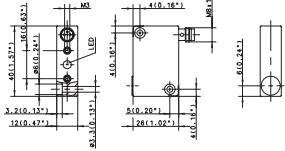
Ambient temperature (min/max)		–25°C/+70°C	–25°C/+70°C	–25°C/+70°C	–25°C/+70°C
Protection class in accordance with IEC 529, EN 60529		IP67	IP67	IP67	IP67
Enclosure material		PBTB	PBTB	PBTB	PBTB
Connection		4-pin	4 x 0.14 mm ²	4 x 0.14 mm ²	4 x 0.14 mm ²

Please refer to Accessories for reflectors, mounting brackets, cable couplers and sensor tester.

^② Antivalent output



40 x 26 x 12 mm Diffuse-reflection sensor Type D 40 mm Connector M8			
---	--	--	--



6557950006 OR15RT-DHTP-0040-SL			

10–36 VDC			
200 mA			
> 100 Hz			
Cyclic			
LED/-			
-			
IR 880 nm			

-5°C/+70°C			
IP65			
PA			
M8 x 1			

